

(12) INTERNATIONAL APPLICATION PUBLISHED UNDER THE PATENT COOPERATION TREATY (PCT)

(19) World Intellectual Property Organization
International Bureau



(43) International Publication Date
14 June 2001 (14.06.2001)

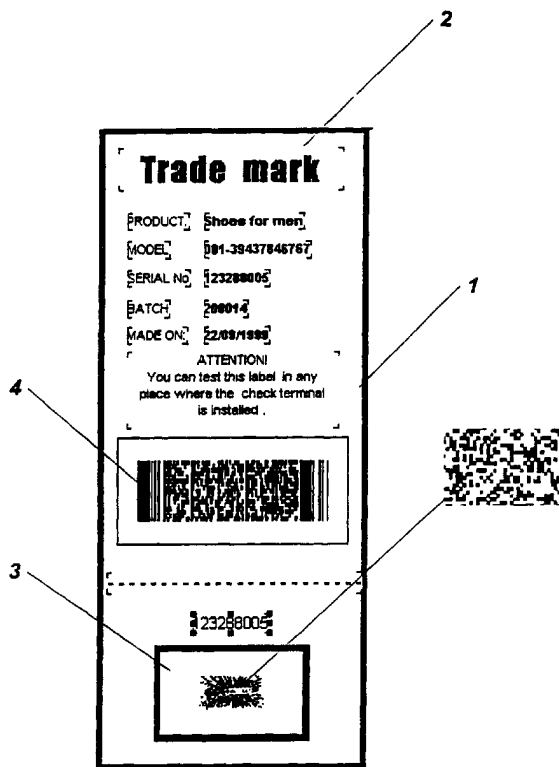
PCT

(10) International Publication Number
WO 01/43086 A1

- (51) International Patent Classification⁷: **G07F 7/08** (74) Agent: VINOGRADOV, Sergei G.; a/ya 261, Minsk, 220006 (BY).
- (21) International Application Number: PCT/BY99/00011
- (22) International Filing Date: 8 December 1999 (08.12.1999)
- (25) Filing Language: English
- (26) Publication Language: English
- (71) Applicant and
(72) Inventor: **MISCHENKO, Valentin Alexandrovich** [BY/BY]; ul. Nekrasova, 28-210, Minsk, 220040 (BY).
- (81) Designated States (*national*): AE, AL, AM, AT, AU, AZ, BA, BB, BG, BR, BY, CA, CH, CN, CR, CU, CZ, DE, DK, DM, EE, ES, FI, GB, GD, GE, GH, GM, HR, HU, ID, IL, IN, IS, JP, KE, KG, KP, KR, KZ, LC, LK, LR, LS, LT, LU, LV, MA, MD, MG, MK, MN, MW, MX, NO, NZ, PL, PT, RO, RU, SD, SE, SG, SI, SK, SL, TJ, TM, TR, TT, TZ, UA, UG, US, UZ, VN, YU, ZA, ZW.
- (72) Inventors; and
(75) Inventors/Applicants (*for US only*): **HRISHANOVICH, Igor A.** [BY/BY]; ul. Lunacharskogo, 5-39, Minsk, 220071 (BY). **MISCHENKO, Anatoly Valentinovich** [BY/BY]; ul. Miroshnichenko, 5-47, Minsk (BY).
- (84) Designated States (*regional*): ARIPO patent (GH, GM, KE, LS, MW, SD, SL, SZ, TZ, UG, ZW), Eurasian patent (AM, AZ, BY, KG, KZ, MD, RU, TJ, TM), European patent (AT, BE, CH, CY, DE, DK, ES, FI, FR, GB, GR, IE, IT, LU, MC, NL, PT, SE), OAPI patent (BF, BJ, CF, CG, CI, CM, GA, GN, GW, ML, MR, NE, SN, TD, TG).

[Continued on next page]

(54) Title: METHOD AND SYSTEM FOR AUTHENTICATION OF ARTICLES



(57) Abstract: A method for marking comprises applying a unique image (3) on to the surface of the article or a label. The surface for applying an image should have a rough texture. The applied image is scanned by the scanner (6) and encoded. The code (4) is applied on to the label next to the image. The code data and the image data are transferred to the remote control center. Authentication is performed at the checking terminals located in public

[Continued on next page]



WO 01/43086 A1